

A child is playing with colorful building blocks (red, blue, yellow, green) on a carpeted floor. An adult's hand is visible, gently guiding the child's hand as they play. The background is softly blurred, showing a white table and other toys.

PLAY IN PAEDIATRIC NEPHROLOGY ROAD TO FUTURE

Dr. Fanny Ho

Hong Kong Children's Hospital

Paediatric Nephrology Centre

- Tertiary Centre in HK x Complicated Kidney Diseases
 - Congenital abnormalities of kidney and urinary tract
 - Glomerulonephritis / Nephrotic syndrome
 - Hereditary / genetic kidney disease
 - Metabolic disease
- Acute kidney injury
- Chronic kidney disease
- Renal failure
 - Hemodialysis
 - Peritoneal dialysis
 - Kidney Transplant



Importance of Psychosocial Support

- Potentially painful procedures
 - Blood taking / renal biopsy / insertion of catheters
- Emotional Stress
 - Understanding / Coping with chronic illness
 - Living with uncertainty
- Growth restraint
- Deprivation in educational / social aspect

Play is Essential!



- Healthy development
 - Physical
 - Cognitive
 - Emotional
- Aids to conquer fears
- Strengthen carers-children understanding
- Peer Interactions

Milestones of Collaboration with Nephrology team



1999

2003

2005

2017

2019

2020-2021

2022 and beyond

1999

Playright service started in Paediatric Nephrology Centre in PMH

- Normative play
- Medical play

2003

Play packs for hospitalized children



2017

Hospital Authority Outstanding Staff and Teams Award 2017

2019

Transition programme for relocation of Paediatric Nephrology Centre
PMH >> HKCH

2020-2021

Service under COVID
Online to offline

2022

On-site play service in ward, and events resumption

Workflow

Assessment
Assess of level of understanding
of illness, anxiety level and
emotion status



Care plan
Provide suitable
intervention according to
needs



Re-assessment
Assess for new service needs



Referral
Discussion of case needs



Review
Discuss with medical team about
progress



Continue support
Support for outpatients



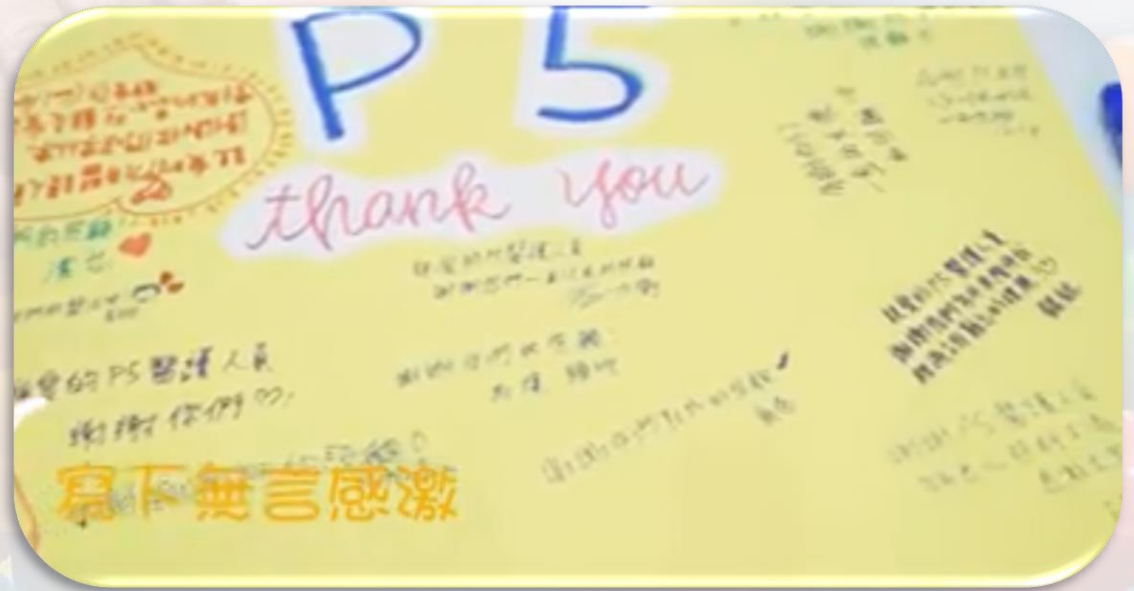
Collaboration – In Hospital

- Normative Play
- Medical Play
 - Age-specific
 - Diagnoses-specific
- Distraction play



Transitioning Programme – PMH to HKCH

- Translocation of Service
 - Promote adjustment to new environment
- Saying goodbye
 - Farewell party
 - Thank you card



Transitioning Programme – PMH to HKCH

- Saying Hello!
 - Play cart
 - Pamphlet to introduce HKCH
 - Tour to HKCH



Transitioning Programme – PMH to HKCH

- Grand opening of
 - Outpatient Service
 - In-patient Service



In Hospital – During COVID

- Suspension of non-urgent clinical services
 - Playright channel
 - Online play sessions
 - Toy packs
 - Listen to Children's Voices campaign



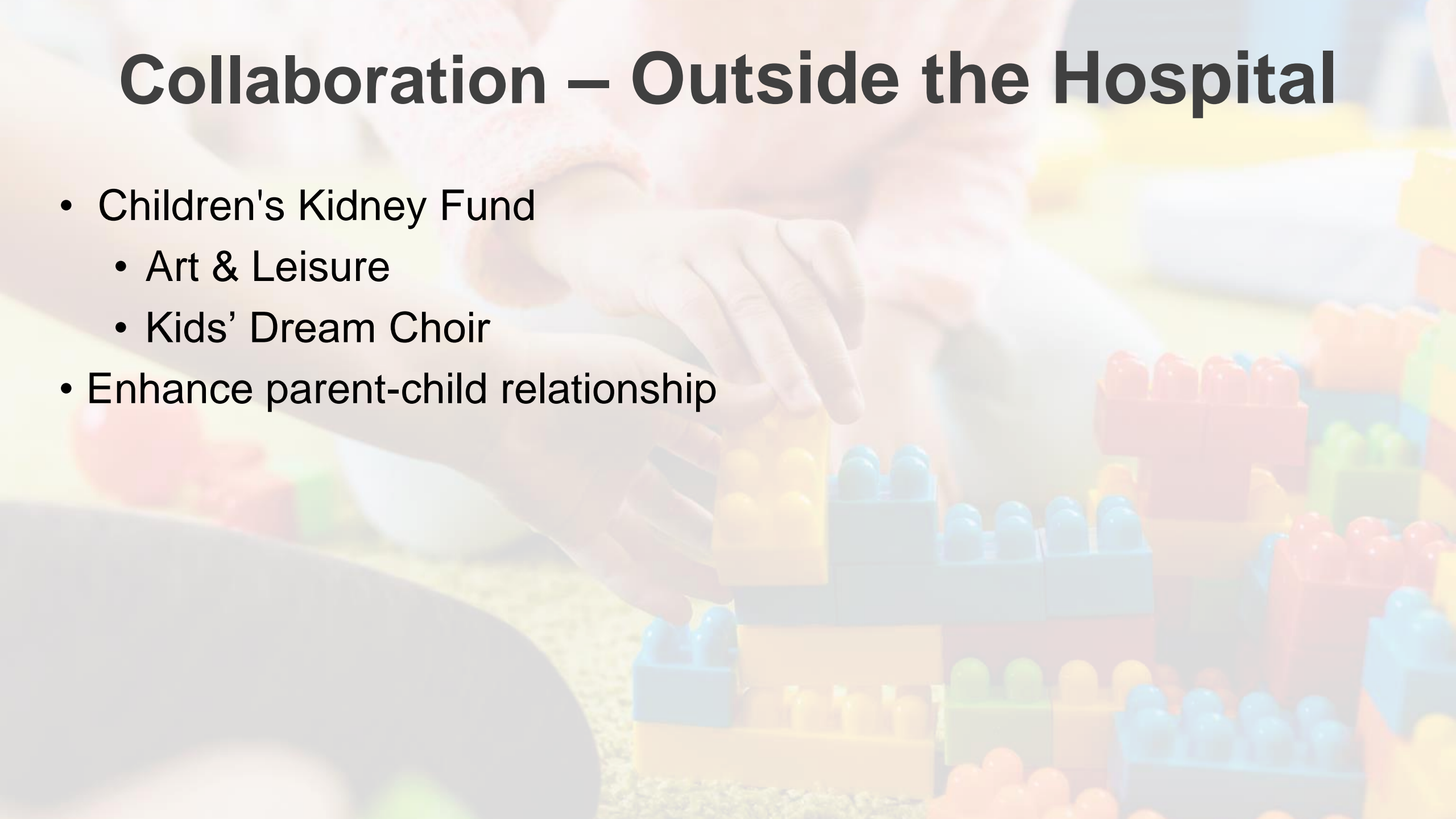
Collaboration – Outside the Hospital

- Organize workshop for families
- Happy Bear's Hospital



Collaboration – Outside the Hospital

- Children's Kidney Fund
 - Art & Leisure
 - Kids' Dream Choir
- Enhance parent-child relationship



Case - Preparing patient for procedure



Case - Emotion support for patient



Hospital Play Service

Provide over
1000
play sessions
per year



Support over
800
Haemodialysis
sessions
per year

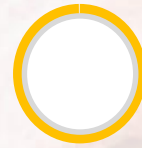


Organized over
100
events for
Nephrology
patients and
families

support over
100
patients and
families



Service survey in 2022-2023(Patients and Parents)



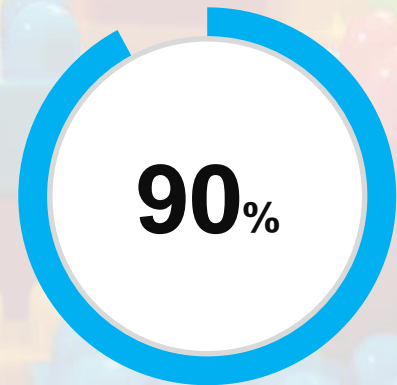
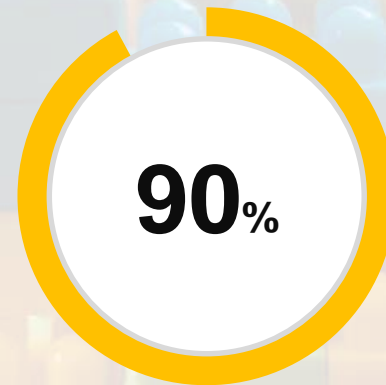
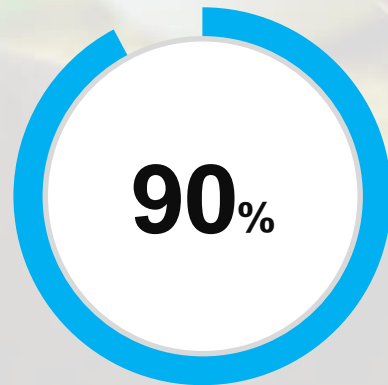
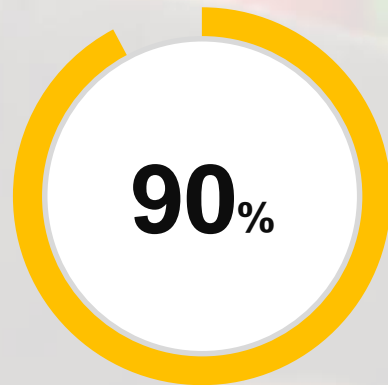
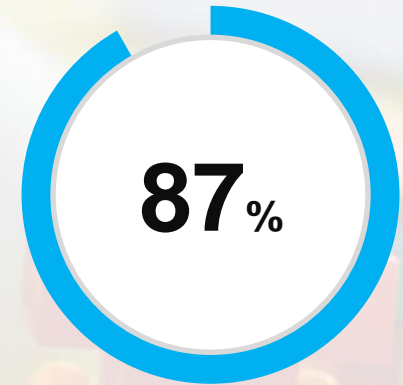
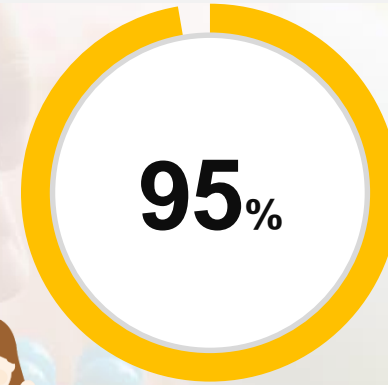
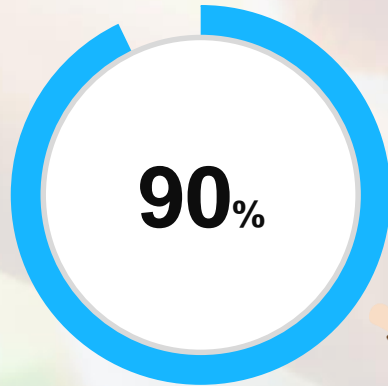
Patients



Parents

Satisfy with Hospital Play service

Agree play service is essential for Nephrology patients



Reduce negative emotions of patients and parents

Aid patients' adaption of hospitalization

Sharing from Patients

謝謝你們帶給我們歡樂和開心，讓我們有能力與病魔抗爭

Thank you for bringing us joy and happiness, **empowering** us to fight the illness

8 yrs/M

謝謝你們的陪伴 有你們的陪伴很开心 ❤️❤️

Thank you for your **companionship**, it has delighted my heart

13yrs/F

好好，對於年齡較少的病童都好需要這服務

It's a **good service** for younger children

18yrs/F

沒有爸爸媽媽陪,遊戲師就可以陪小朋友玩
Sometimes when parents aren't here, Hospital play specialist can **support**

9yrs/F



Sharing from parents

遊戲師有耐性、細心、無偏私的帶歡樂與陽光給病童，令小朋友能在黑暗中走出來，作為家長的我只能向所有遊戲師說聲多謝！她們陪伴著我女兒，心裏就是無言感激！

Hospital play specialists are patient, attentive and treat everyone equally.

They **bring happiness and sunshine to the child patients, and bring them out of the darkness.**

As a parent, I would like to say thank you to all of you for being a good companion to my daughter.

Thank you very much!

多謝你們的付出，希望一直都會有遊戲服務給予一班兒童病患者。

Thank you for your work! **I wish this service can stay and continue to provide support to child patients.**

多謝你們讓病童更快適應醫院生活。

Thank you for **supporting child patients in adjusting to hospitalization.**



Service survey in 2022-2023 (Hospital Staff)

Satisfy with Hospital
Play service

99%

Agree play service is
essential for Nephrology
patients

99%

Reduce work
stress

93%

Aid patients' adaption of
hospitalization

95%

93%

Reduce negative emotions of patients and parents



Challenges

- Recognition of play as an **essential** part of holistic patient management
 - Medical staff
 - Patient
 - Parents
- Evidence-based practice/ Research
 - Quality of life
- Investment in play service
 - Policy makers
 - Funders
- COVID / Epidemics

Way Forward...

- Development of evidence based, systematic intervention protocols
 - Hemodialysis
 - Peritoneal dialysis
 - Kidney transplant
- Patient empowerment
 - Minimize disability; Maximize potential
 - Transitional Service to adult nephrology
- Development of renal palliative service

A close-up, slightly blurred photograph of a child's hands holding a small, colorful toy structure made of interlocking blocks. The child is wearing a light-colored, textured sweater. The background is a soft-focus indoor setting with more toys and a yellow surface. The text 'thank you!' is overlaid in the center of the image.

thank
you!