



**LIVE FROM THE SCENE**

Behind the Scenes  
Enthusiasm and Passion

**LOOKING AHEAD**

Internal and External Elevation to  
Consolidate Sustainable Development

**Grand Occasion for Paediatric Healthcare Sector**

Playright has been striving to promote children’s play, with paediatric patients being our service targets. Since 1994, Playright has been stationed in public hospitals, providing hospital play service for hospitalized children and working closely with healthcare professionals in different hospitals across Hong Kong.

With the support of our long-time funder – The Hong Kong Jockey Club Charities Trust, we held a large-scale seminar focused on play in the healthcare sector – PLAY for Child Health Seminar – for the first time to develop our hospital-based services further. Apart from partnering with the Hong Kong Children’s Hospital, we invited overseas experts from the United Kingdom and United States of America and joined hands with local doctors and nurses from different specialties. Different parties were brought together to elaborate on key concepts and modes of cooperation of Hospital Play (Child Life) to highlight its positive effects to all local paediatric healthcare professionals.





## A Dynamic Opening Ceremony Signifying Hope

The seminar was held on 11 February 2023 in a hybrid mode at the lecture theatre of the Hong Kong Children's Hospital. The opening ceremony was officiated by Dr Libby LEE Ha-yun (third from left), Under Secretary for Health, Health Bureau; Ms Winnie YIP (second from right), Executive Manager of Charities (Sports and Culture), The Hong Kong Jockey Club; Dr LEE Tsz-leung (second from left), Hospital Chief Executive, Hong Kong Children's Hospital; Ms Lindsay HEERING (first from right), President of Association of Child Life Professionals and Ms Anita MA Wai-man (first from left), Chairperson of the Executive Committee of Playright. The guests opened a play box created by hospital play specialists from which vibrant and colourful balloons representing hope and the future rose, signifying the flourishing development of the service.



Ms Anita MA Wai-man,  
Chairperson,  
Executive Committee, Playright



Dr LEE Tsz-leung,  
Hospital Chief Executive,  
Hong Kong Children's Hospital



Dr Libby LEE Ha-yun,  
Under Secretary for Health,  
Health Bureau



Ms Alison E. HERON,  
Chief Executive Officer,  
Association of Child Life Professionals



Ms Winnie YIP,  
Executive Manager of Charities  
(Sports and Culture),  
The Hong Kong Jockey Club



Ms Lindsay HEERING,  
President,  
Association of Child Life Professionals

# A Clear Theme and a Definite Objective

With the COVID pandemic winding down, the seminar was conducive to promoting the exchanges between overseas experts and their local counterparts and enhancing the understanding of Hospital Play (Child Life) among paediatric healthcare professionals. It also allowed to learn from the experiences of overseas and local experts in a bid to establish localized services and reconstruct and review support and follow-up services for paediatric patients in the post-pandemic era. Consequently, we can work more together to provide the best care addressing paediatric patients' physical, psychological and social needs from a child-oriented perspective.



## Keynote Presentation: Detailed Elaboration on Differences between Overseas and Local Services

The keynote presentation included introducing the implementation of Hospital Play (Child Life) in the United States of America, the service's standards and modes of operation, the local implementation of the service, and the challenges involved. The panel discussion that followed was on-point: an exploration of the direction of sustainable development of local hospital play services.

### Child Life: Standard of Care for Paediatric Healthcare



Ms Lindsay HEERING,  
President,  
Association of Child Life Professionals

### Child Life Services at Boston Children's Hospital



Ms Christine DUMAIS,  
Child Life Specialist II,  
Boston Children's Hospital



### East meets West – the Uniqueness of Child Life in Hong Kong



Ms Candy LO,  
President,  
Hong Kong Child Life Association

# Concise and Inspirational Breakout Session

The breakout session was arranged according to different specialties. Doctors and nurses from their respective specialties introduced the concepts of child-oriented treatment and the methods and effects of hospital play support. The specialties covered Endocrinology, Nephrology, Radiology, Anaesthesiology, Orthopaedics and Palliative Care. The impact of the pandemic and the related response plans were also among the discussion topics.



## Let's Gear up for the Adventure – Hospital Play (Child Life) for Endocrinology Patients



**Dr Joanna TUNG,**  
Consultant (Endocrinology),  
Hong Kong Children's Hospital



**Dr Diva D. De León-Crutchlow,**  
Chief of the Division of Endocrinology and  
Diabetes & Director of the Congenital  
Hyperinsulinism Center,  
Children's Hospital of Philadelphia

## Hospital Play (Child Life) Service for Nephrology Patients

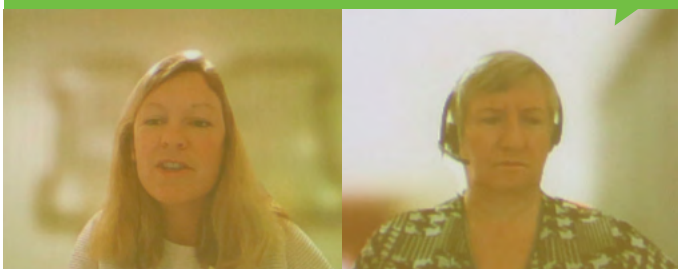


**Dr Alison MA,**  
Service Head (Nephrology),  
Hong Kong Children's Hospital



**Dr Fanny HO,**  
Associate Consultant (Nephrology),  
Hong Kong Children's Hospital

## Hospital Play (Child Life) Service for Nephrology Patients



**Dr Helen JONES,**  
Consultant  
Paediatric Nephrologist,  
Evelina London  
Children's Hospital

**Ms Grainne M. WALSH,**  
Paediatric Advanced  
Nurse Practitioner,  
Evelina London  
Children's Hospital

## The Impact of COVID-19 Pandemic on the Socio-Emotional Development of Children and the Role of Quality Parent-Child Interaction and Lifestyle Modifications



**Dr Patrick IP,**  
Immediate Past President,  
Hong Kong Paediatric Society





Children & their Families in the Pandemic – How the Disease and the Isolation Impact on their Well-being



**Dr Mike KWAN,**  
Consultant, Paediatric Infectious Diseases,  
Department of Paediatrics and Adolescent  
Medicine, Princess Margaret Hospital

Budding Well Project – Play, Leisure and Arts as healing elements in Children born with Upper Limb Anomalies



**Dr HO Pak-cheong,**  
Chief of Service, Orthopaedics & Traumatology,  
Prince of Wales Hospital

Hospital Play (Child Life) for Radiology, Hong Kong Children’s Hospital



**Dr Elaine KAN,**  
Chief of Service, Department of Radiology,  
Hong Kong Children’s Hospital

Hospital Play (Child Life) for Anaesthesiology, Hong Kong Children’s Hospital



**Dr Vansie KWOK,**  
Associate Consultant (Anaesthesiology),  
Hong Kong Children’s Hospital

Hospital Play (Child Life) for Paediatric Palliative Care

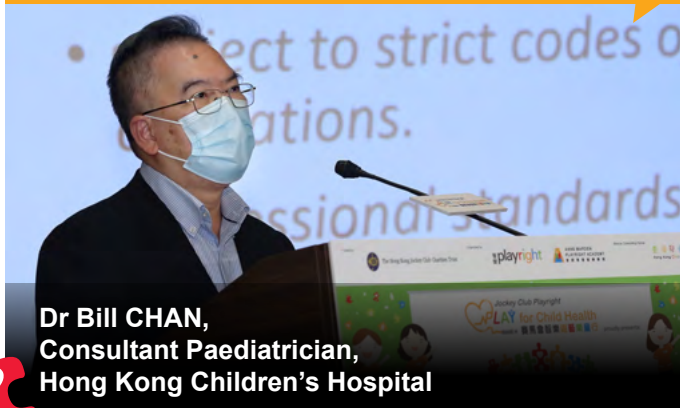


**Dr Mandy MAN,**  
Associate Consultant (Palliative Care),  
Hong Kong Children’s Hospital



**Ms KWOK Ting-fong,**  
Advanced Practice Nurse,  
Hong Kong Children’s Hospital

Training of the budding Child Life Specialists in Hong Kong



**Dr Bill CHAN,**  
Consultant Paediatrician,  
Hong Kong Children’s Hospital

Sharing of Good Practices in Hospital Play (Child Life) for Sustainable Development



**Ms Chiko CHONG,**  
Certified Child Life Specialist, Playright



Successful cases and firsthand experiences of integrating hospital play support were shared by healthcare professionals which demonstrated that Hospital Play (Child Life) must be an integral part of the local healthcare system. Hence, there was also a special session in which the key features of the development of a hospital play service were presented, and the best practice code accumulated for over two decades was also shared by hospital play specialists.



The panel discussion on the stage was chaired by Dr Bill CHAN (first from left), Chairperson of Organizing Committee of the seminar cum Consultant Paediatrician, Hong Kong Children's Hospital. Other panelists include (from right) Dr Alan SO, Co-Chairman, Co-ordinating Committee (Paediatrics), Hospital Authority; Prof. Simon LAM, President, Hong Kong College of Paediatricians; Dr Genevieve FUNG, President, Hong Kong Paediatric Society; Ms Janice MA, President, Hong Kong College of Paediatric Nursing and Ms TANG Sze-kit, President, Hong Kong Paediatric Nurses Association. They shared the belief in the importance of Hospital Play (Child Life) and discussed the strategies for promoting the service.



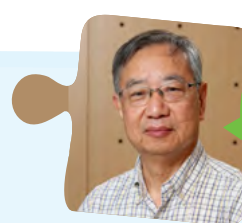
Question and answer sessions were held following the breakout session. One of them was chaired by Prof. Janet WONG (first from right), Dean of Nursing & Health Studies, Hong Kong Metropolitan University. The other speakers include (from left) Dr HO Pak-cheong, Dr Patrick IP, Dr Joanna TUNG and Dr Elaine KAN.

Another question and answer session was chaired by Prof. LI Chi-kong (first from right), Professor, Department of Paediatrics, The Chinese University of Hong Kong. Other speakers include (from left) Dr Fanny HO, Dr Alison MA, Dr Vansie KWOK, Dr Mandy MAN, Ms KWOK Ting-fong and Dr Mike KWAN.

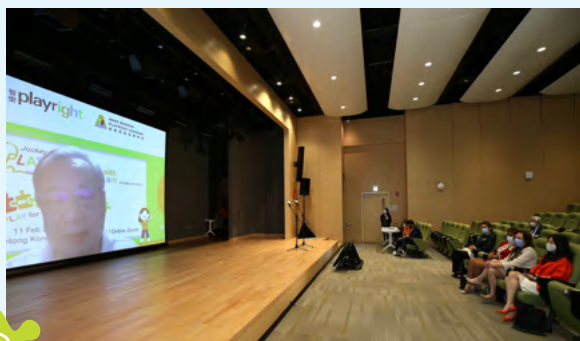
The seminar was positively received and recognized by the attending healthcare professionals. Their responses reflected their genuine care for the well-being of paediatric patients. There was a strong consensus that only with like-minded professionals across different sectors can Hospital Play (Child Life) advance in Hong Kong.

## Paediatric Veteran's wise Conclusion

**Dr CHOW Chun-bong,**  
Honorary Advisor,  
Playright



Hospital play should be developed into a localized and regular service.



Dr CHOW Chun-bong, Honorary Advisor of Playright, delivered the concluding remarks at the end of the seminar. He pointed out that hospital play services require to be implemented by staff who have the proper professional training. Complemented with a comprehensive training plan, the service would be localized and strengthened to be a regular service. In the meantime, we should continue to exchange and cooperate with healthcare professionals to achieve the goal of caring for children's physical and psychological needs.





# File of the Seminar

- Over 700 healthcare professionals enrolled in the seminar
- Over 100 experts joined in person, and 558 participated online
- The seminar has been included in the Continuing Professional Development (CPD) system. Participants can acquire corresponding points.
- Supporting organizations included 16 medical professional associations/organizations and 3 patient support groups, including:  
(Presented in alphabetical order)

- Hong Kong Child Life Association (HKCLA)
- Hong Kong College of Anaesthesiologists (HKCA)
- Hong Kong College of Orthopaedic Surgeons (HKCOS)
- Hong Kong College of Paediatric Nursing (HKCPN)
- Hong Kong College of Paediatricians (HKCPaed)
- Hong Kong College of Radiologists (HKCR)
- Hong Kong Occupational Therapy Association (HKOTA)
- Hong Kong Orthopaedic Association (HKOA)
- Hong Kong Paediatric Nephrology Society (HKPNS)
- Hong Kong Paediatric Nurses Association (HKPNA)
- Hong Kong Paediatric Society (HKPS)
- Hong Kong Society for Paediatric Immunology Allergy and Infectious Diseases (HKSPIAID)
- Hong Kong Society of Children's Palliative Care (HKSCPC)
- Hong Kong Society of Paediatric Endocrinology and Metabolism (HKSPEM)
- Hong Kong Society of Paediatric Respiriology and Allergy (HKSPRA)
- Paediatric Neurology Association of Hong Kong (PNAHK)
- Children's Kidney Fund
- Little Life Warrior Society
- Youth Diabetes Action





# Behind the Scenes Enthusiasm and Passion

Every Detail of the Seminar Skillfully Planned and Well Made



## Ingenious Design

To promote the rare grand occasion for the paediatric healthcare sector, we put special thoughts into the thematic design of the event and applied the design to the marketing collaterals. The key design was colourful jigsaw puzzle pieces, each painted with simple graphics representing stakeholders from different areas: hospitals, healthcare professionals, funders, experts and academics. Piecing together the pieces signifies that various stakeholders connect and join hands with hospital play specialists to construct a holistic blueprint of healthcare for children.



## Playful Souvenir

Every healthcare professional attending the seminar was a treasured guest. To show our gratitude, we created a fun and practical gift – a playful key chain! The hemisphere-shaped acrylic ball was inserted with an illustration of hospital play specialists as the background with added shimmering paper flakes. The flakes would be randomly dispersed inside the ball upon shaking it. The key chain not only complies with the standards of infection control measures and is easy to clean but makes an excellent distraction tool. By using it well, healthcare professionals can turn into playful professionals whenever necessary.







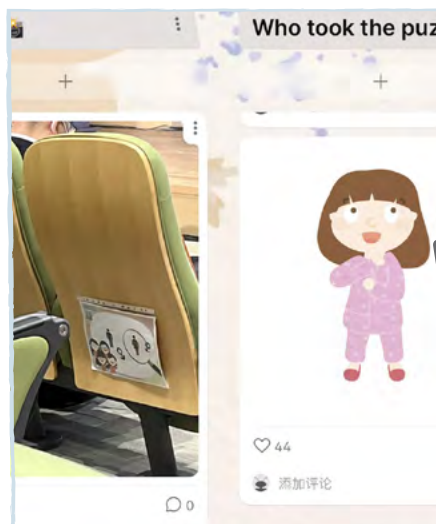
## Eye-catching Booklet

At the seminar, the healthcare professionals talked about the effects of hospital play provided in different settings of different specialties. But how do hospital play specialists play with paediatric patients? To answer the query, we produced a booklet. In a clear and straightforward layout, we introduced the workflow of hospital play conducted in different specialties. From assessment, play planning and play intervention to the effectiveness of the play/ intervention, the whole process of hospital play was presented in an easy-to-understand way. This helped participants to understand the profession of hospital play clearly.



## Marvelous Play

The theme of the seminar was play. How could we afford to miss a chance to play on-site? After careful consideration, we created an interactive play activity that allowed guests on-site and online to join. The activity was simple, requiring everyone to complete a puzzle of a playful hospital. Firstly, the guests had to find the attendants who might have hidden a piece of the puzzle at the lecture theatre and take a picture. Then pictures of the attendants were uploaded online for others to guess who had truly hidden the puzzle. The whole process was filled with laughter and enjoyment. The game also allowed healthcare professionals to experience the magic of play.





## Professional Participation

We believe that healthcare professionals would make an even more convincing declaration of the merits of hospital play than we do ourselves. It was an honour for us to have invited 25 healthcare professionals from 11 specialties to spare their valuable time to be our guest speakers on stage or during breakout sessions, or as a panelist or expert at the question-and-answer session. Before the seminar, some of them were also willing to discuss the contents to be shared, gracing us with their professional knowledge. We were excited to have close partners from the healthcare profession to support us in person.

Orthopaedic surgeon, Dr Lucci Lugee LIYEUNG was among the healthcare professionals who supported us on stage. Not only did she take up the role of seminar host, but she had also actively supported us previously in different ways, ranging from the co-creation of the picture book “Cast Guards” to the exploration of different hospital play interventions. Unsurprisingly, Dr LIYEUNG accepted our invitation to be a host without hesitation. Her calm and expert presentation proved her to be an ideal advocate for hospital play.





## Unsung Heroes

The seminar would only be held successfully with elaborate preparations. We must first express our gratitude to the Hong Kong Jockey Club Charities Trust. With its support, we could launch the 5-year “Jockey Club Playright P.L.A.Y. for Child Health” project from February 2019 to March 2024 which included the PLAY for Child Health Seminar.

Moreover, we must acknowledge the seminar collaborating partner, the Hong Kong Children’s Hospital to lend out the venue. Also we want to thank 19 supporting organizations. We are also most grateful to the two representatives of the Association of Child Life Professionals, who traveled a long distance from the USA; the representatives of the relevant organizations of the UK and the USA whom we connected online; local guest speakers from the healthcare sector, as well as every participant who attended the seminar in person or online.



We must not forget the members of the seminar’s Organizing Committee, the hospital play team, and staff from every department of Playright.

With concerted efforts and a unified goal, we can achieve big for the well-being of children. We expect that after the seminar, the puzzle will be enlarged to attract more healthcare professionals to support our cause and to construct a holistic healthcare blueprint for children. On behalf of the children, we say a big thank you to you all!



Seminar website



# Internal and External Elevation to Consolidate Sustainable Development

The seminar was a golden opportunity for Playright to strengthen the healthcare professionals' understanding of hospital play services. We also hoped that the service could thrive through extending to different areas and developing internally and externally. Our dreams came true in various areas, including overseas networks, professional recognition, service areas, knowledge and experiences, manpower training and research.



## Overseas Reference

Our counterparts from the Child Life Services in the USA and the Health Play Services in the UK coincidentally pointed out that their respective local healthcare groups recognized their service and profession. Local governments also acknowledged the profession in the official qualifications framework. Moreover, the development of related online and offline training, regular participation and exchanges in international conferences and academic research was quite mature. The development of Health Play Services in the UK and Child Life services in the USA were good examples for us to use as a reference when we set the direction and blueprint of development in Hong Kong.



## Professional Accreditation

The US-based Association of Child Life Professionals is an internationally recognized organization advancing the field of Hospital Play (Child Life) services. Ms Lindsay HEERING, President of the Association, and Ms Alison E. HERON, Chief Executive Officer of the Association, were our distinguished guests of the seminar. During their stay in Hong Kong, we arranged workshops for exchange of ideas, site visits to hospitals, and meetings with the management of the hospitals. Having gained a first-hand understanding of our hospital play service, both of the authoritative figures agreed that Playright had already developed a mechanism of provision of hospital play service in Hong Kong to a good standard.



The hospital play service puts great emphasis on tailor-made play intervention. Ms HEERING and Ms HERON greatly appreciated our hospital play specialists' professional enthusiasm and creativity. They found the Hong Kong version of Magnetic Resonance Imaging (MRI) play tools an eye-opener and worthy of sharing with the Child Life Specialists in the USA.

## Service Expansion

- Through the comprehensive elaboration of the hospital play service at the seminar, the hospital staff of the Orthopaedics gained more confidence in this service. This in turn stimulated the expansion of Orthopaedics service in the Hong Kong Children's Hospital, benefiting more children.
- Upon learning about the thorough care given by hospital play specialists to paediatric patients, the Anaesthesiology team of the Pamela Youde Nethersole Eastern Hospital considered including hospital play services in their regular healthcare service and inviting hospital play specialists to introduce current services and share play ideas of playing with paediatric patients.

## Local Training

As a result of the two experts from the Association of Child Life Professionals coming to Hong Kong to assess and observe our hospital play services in person, we are a step closer to align with the Association and further develop the training mechanism and professional accreditation. This will enable those interested to engage in the profession to complete their internship in Hong Kong and obtain a professional qualification recognized in the USA.

Apart from building up a training framework with the overseas organizations, we also discussed the development of training programmes with local universities. We discussed with Professor William LI Ho-cheung of the Chinese University of Hong Kong; Professor Janet WONG Yuen-ha of the Hong Kong Metropolitan University, Dr Pauline CHAN Po-lin of the Education University of Hong Kong on how to train personnel for play services and to draw up a training framework for the continuous development of the profession.

## Empirical Research

At the seminar, speakers explained the impacts of hospital play services through case studies. The participating scholars from academia and healthcare professional organizations agreed on the positive effects of providing professionally staffed hospital play. Moreover, they emphasized that the effects could be further explored and validated through empirical research and statistics, which were believed to help promote the service. The scholars included Prof. LAM Hugh Simon Hung-san, President, Hong Kong College of Paediatricians; Dr Ellis HON Kam-lun, President, Hong Kong Society of Paediatric Respiriology and Allergy; Dr Susanna LEE, Founding President and Secretary General, Asia Pacific Paediatric Nurses Association; Ms Ada CHAN Yuk-ming, Immediate Past President, Hong Kong Paediatric Nurses Association and Dr CHOW Chun-bong, Honorary Advisor of Playright.

## Professional Sharing

The Department of Radiology of the Hong Kong Children's Hospital, a long-time partner with hospital play specialists, was invited to talk about the mode of cooperation and the positive effects of the hospital play service at our seminar. In return, hospital play specialists were asked to share our work and cases at the Annual Scientific Meeting of Asian and Oceanic Society for Paediatric Radiology to be held in September this year so that more specialists in radiology can learn about hospital play.



Prof. LAM Hugh Simon Hung-san, President, Hong Kong College of Paediatricians (third from right) and Ms Ada CHAN Yuk-ming, Immediate Past President, Hong Kong Paediatric Nurses Association (second from right) posed with the two representatives from the Association of Child Life Professionals (second and third from left) and our representatives.



Dr Ellis HON Kam-lun, President, Hong Kong Society of Paediatric Respiriology and Allergy



Dr CHOW Chun-bong, Honorary Advisor, Playright

# Strive for Long-term Development based on the Existing Foundation



**+ 5 clusters, 7 public hospitals**

## Hong Kong East

**1** Pamela Youde Nethersole Eastern Hospital

## Kowloon Central

**2** Hong Kong Children's Hospital

## Kowloon East

**3** Tseung Kwan O Hospital

## Kowloon West

**4** Caritas Medical Centre

**5** Princess Margaret Hospital

**6** Yan Chai Hospital

## New Territories East

**7** Prince of Wales Hospital



**+ A service team of 26 staff**

**+ Number of beneficiaries reaching 35,000 every year**

**+ Serving 44 wards**

**+ Encountering over 22 types of illnesses**

Paediatrics and Adolescent Medicine, Nephrology, Cardiology, Respiratory Medicine, Infectious Diseases, Hematology, Neurology, Neurosurgery, Paediatric Surgery, Otorhinolaryngology, Ophthalmology, Orthopedics, Radiology, Developmental-Behavioural Paediatrics, Endocrinology, Immunology, Paediatric Developmental Disabilities, Specialist Outpatient Clinic, Neonatology, Paediatric Intensive Care Unit, Metabolic Medicine, Anesthesiology and Perioperative Medicine



# Our heartfelt gratitude



Thanks to the donation of HK\$32,630,000 from the Hong Kong Jockey Club Charities Trust, we have been implementing the 5-year “Jockey Club Playright P.L.A.Y. for Child Health” project from February 2019 to March 2024.

The Community Chest of Hong Kong generously donated HK\$1,234,672 to support the provision of hospital play services in the Department of Paediatrics & Adolescent Medicine of the Princess Margaret Hospital in 2022/23.

Thank you to philanthropists Mr and Mrs Lawrence Ho who generously donated HK\$5,000,000 to support our 5-year “Hospital Play Service @ Caritas Medical Centre” project from April 2020 to March 2025. The project will benefit paediatric patients of the Department of Paediatrics and Adolescent Medicine and the Developmental Disabilities Unit of the Caritas Medical Centre.

Lichi Charitable Foundation Limited continuously supported paediatric patients from the Department of Paediatrics and Adolescent Medicine of the Pamela Youde Nethersole Eastern Hospital. The donation of HK\$400,000 has sponsored our Hospital Play project from April 2021 to March 2023.

With the matching grant from the Partnership Fund for the Disadvantaged, we have been carrying out the “Hospital Play Service in Pamela Youde Nethersole Eastern Hospital” project from April 2021 to March 2023 to increase play provision for paediatric patients in the Department of Paediatrics and Adolescent Medicine of the hospital.

Kadoorie Charitable Foundation generously donated HK\$300,000 to support the production of 300 Medical Experiential Play Boxes for the community and the delivery to the children to experience and enjoy medical play.

The Aberdeen Marina Club generously donated HK\$100,000 to support the provision of hospital play services in the Department of Paediatrics & Adolescent Medicine of the Yan Chai Hospital from October 2022 to March 2023.

Hang Lung Properties Limited generously donated HK\$80,000 to support the production of playpacks and delivery to children in isolated wards from April to September 2022.



We specially thank Dr Yvonne Becher for her editorial guidance.



**The “Hospital Play Service at Princess Margaret Hospital” is supported by The Community Chest of Hong Kong.**

All rights belongs to Playright Children’s Play Association.  
Welcome to copy or share. Please contact us for further enquiry.

智樂playright 看重孩子 看得起遊戲  
VALUE CHILDREN VALUE PLAY

18A, Block F, 3 Lok Man Road, Chai Wan, Hong Kong  
TEL : 2898 2922 FAX : 2898 4539  
EMAIL : info@playright.org.hk WEB : www.playright.org.hk

